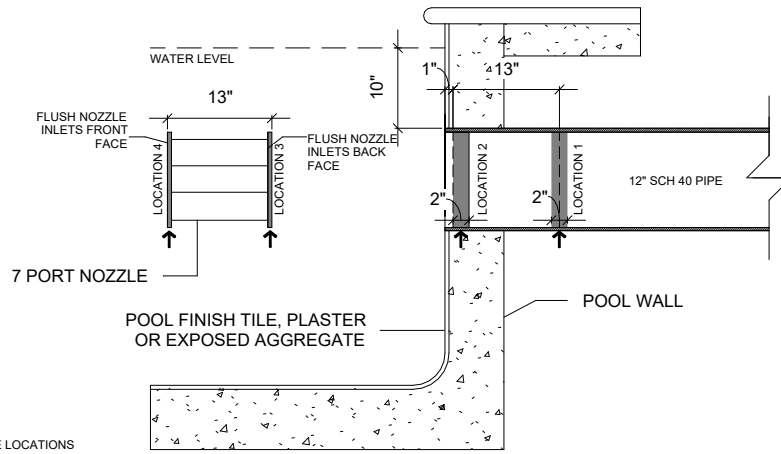


NOTE: MAKE SURE TO APPLY A STRIPE OF GLUE AND PRIMING OF 2 INCHES IN LOCATION 1 AND 2.

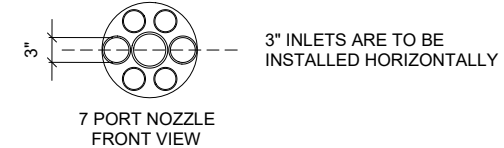


STEP 1. PREPARATION

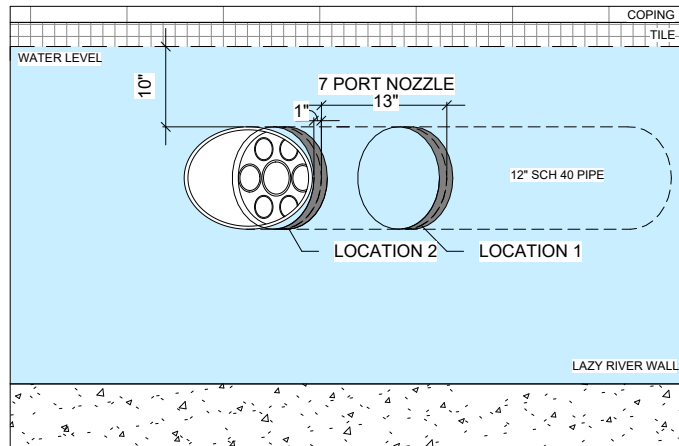
BEFORE APPLYING ANY PRIMER OR GLUE PLEASE TEST FIT THE NOZZLE INTO THE PIPE. THE NOZZLE SHOULD SLIDE INTO THE PIPE WITHOUT BEING FORCED. IF THE NOZZLE DOES NOT FIT, THEN YOU CAN SAND OFF A SMALL AMOUNT OF THE FRONT AND REAR EDGES TILL THE NOZZLE SLIDES IN THE PIPE. MAKE SURE ALL SURFACES ARE CLEAN AND FREE OF DEBRIS BEFORE ANY PRIMER OR GLUE IS APPLIED.

STEP 2. PRIMER AND GLUING

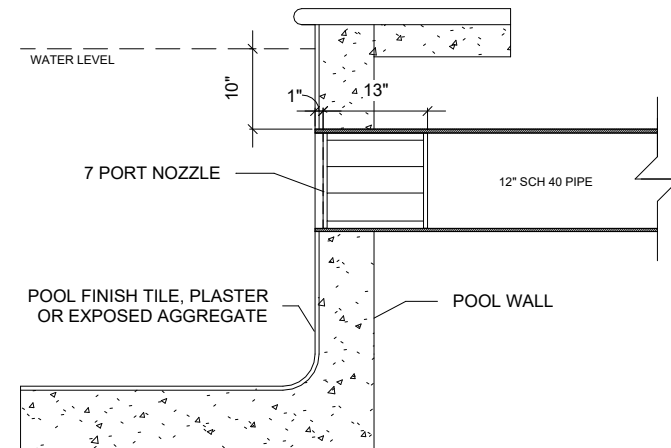
MEASURE 14 INCHES DEEP INTO THE OPENING OF THE PIPE AND APPLY PRIMER AND GLUE TO "PRIMER AND GLUE LOCATION 1 AND PRIMER AND GLUE LOCATION 2". NEXT APPLY PRIMER AND GLUE TO "PRIMER AND GLUE LOCATION 3" AND TO "PRIMER AND GLUE LOCATION 4". INSERT THE NOZZLE INTO THE PIPE SO THE 3 LARGER HOLES ARE HORIZONTAL. ONCE THE NOZZLE HAS BEEN FULLY INSERTED INTO THE PIPE, ROTATE THE NOZZLE LEFT AND RIGHT TO MAKE SURE IT HAS A GOOD COATING OF GLUE. BE SURE THE NOZZLE HAS BEEN PROPERLY ALIGNED BEFORE THE GLUE SETS.



1 7 PORT NOZZLE INSTALLATION  
1/2" = 1'-0"



2 WALL VIEW  
1/2" = 1'-0"



3 INSTALLED 7 PORT NOZZLE  
1/2" = 1'-0"

SHEET TITLE:  
INSTALLATION DETAILS

PROJECT NAME:  
7 PORT NOZZLE LAZY RIVER  
INSTALLATION



ISSUE DATE:  
12/18/23  
DRAWN BY:  
MA  
CHECKED BY:  
PD

PAGE NUMBER:  
D102